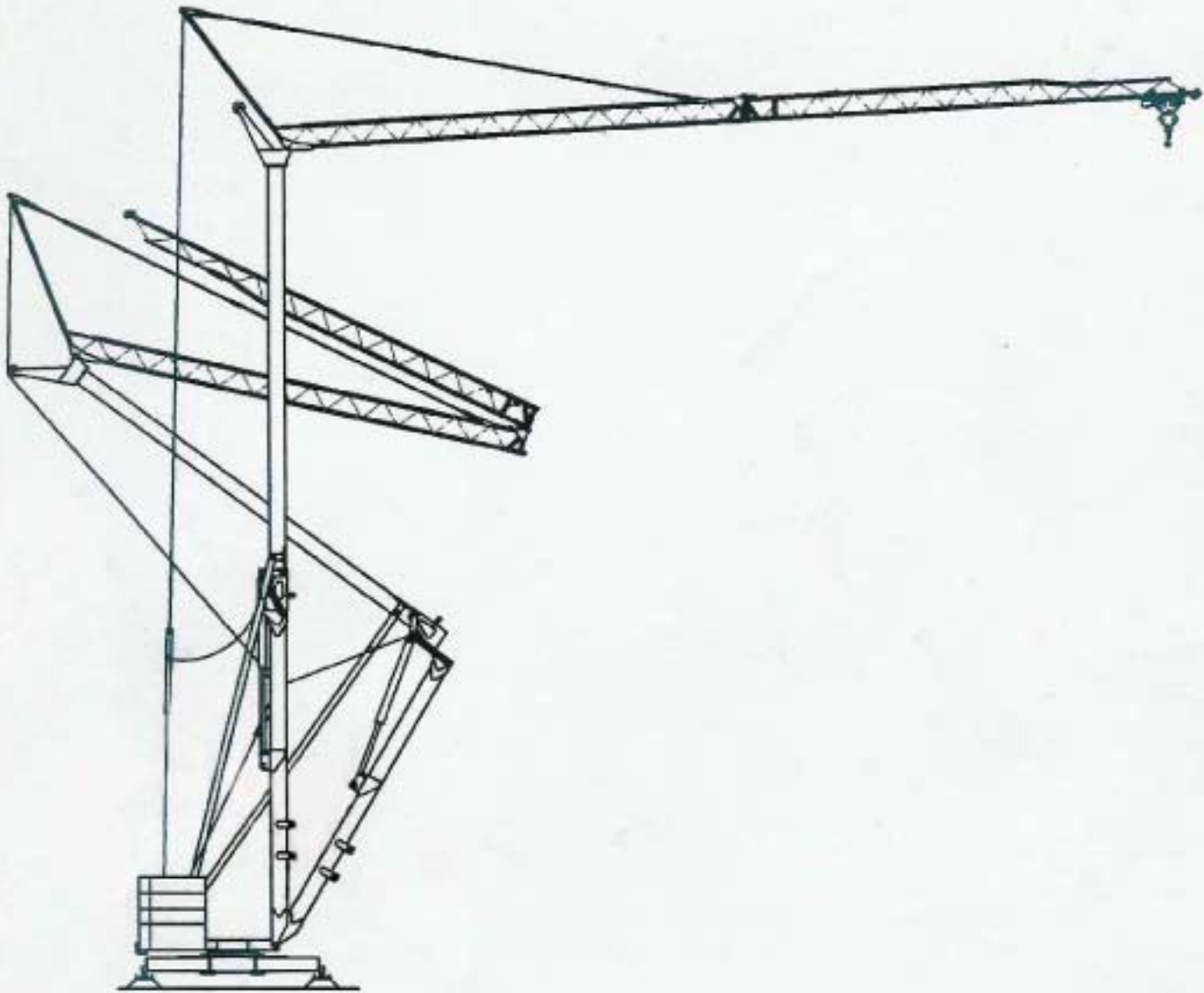
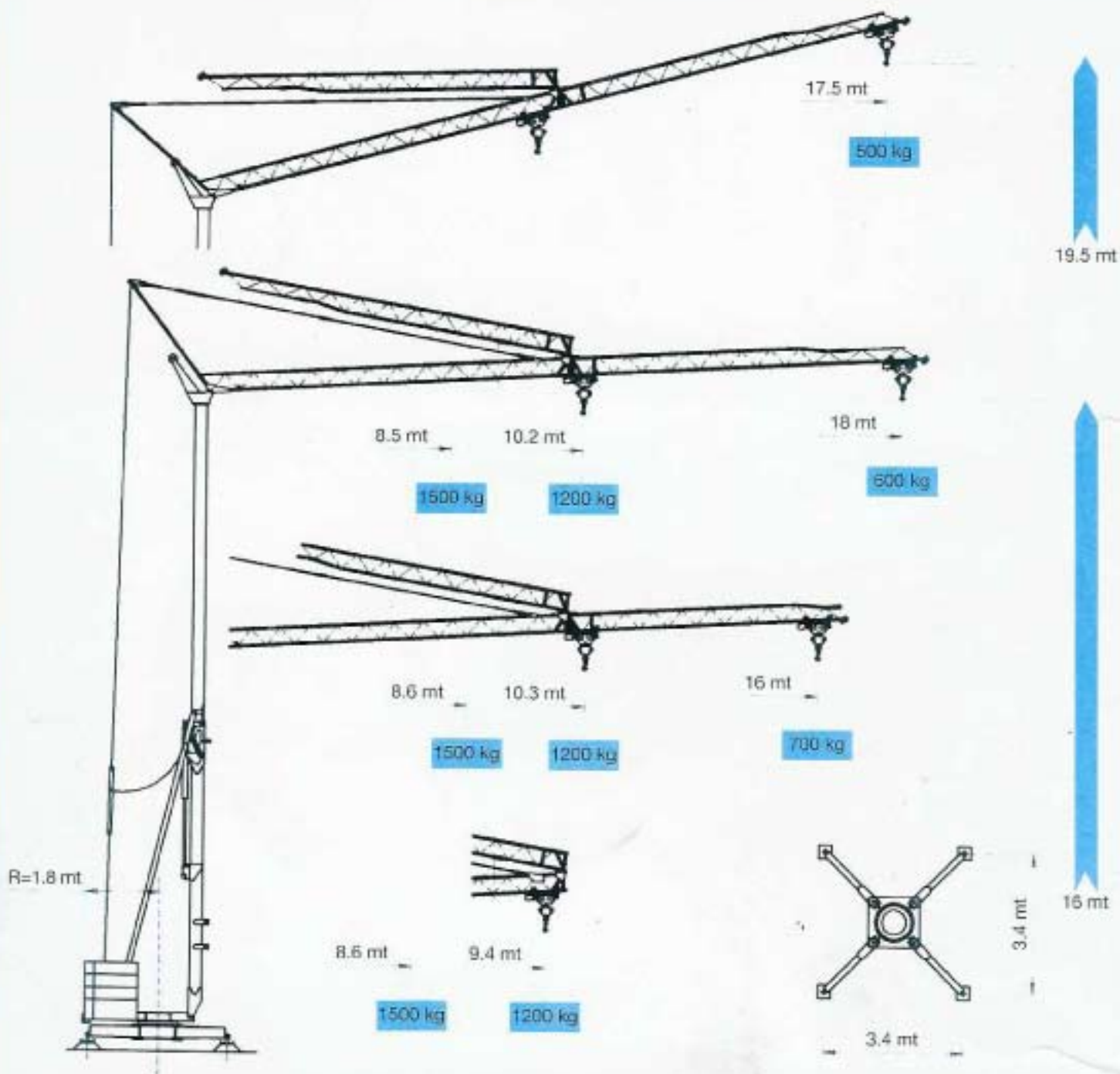




GRU **18.60/15**
CE DIN 15018 - H1 B3



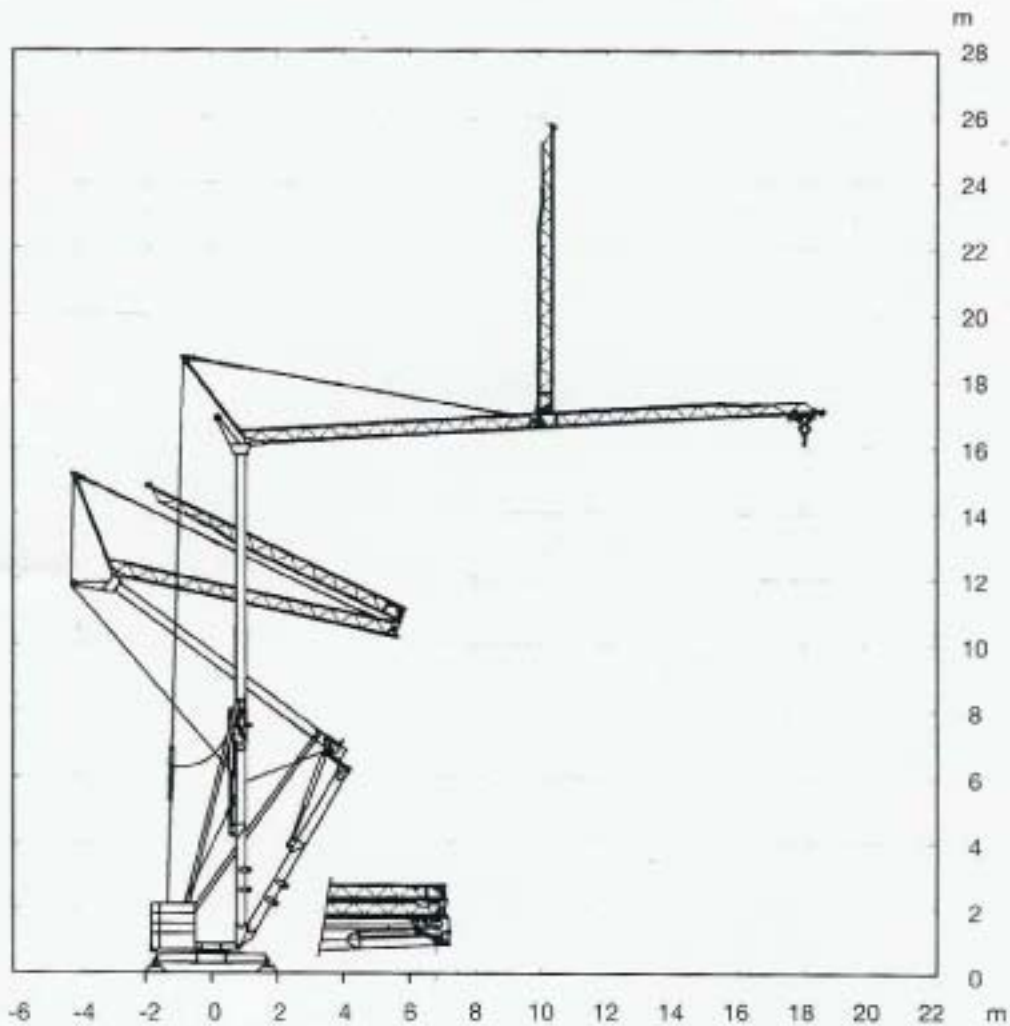
18.60/15



LOAD CURVES • LASTKURVEN • COURBES DE CHARGES • CURVE DI CARICO • CURVAS DE CARGA

	T 1,5	MT	8,5	10,2	12	14	16	18	Luffjib Ausleger in Stellstellung Flache oberer Bocke reponiert Braz reponiert 500 Kg cost
		KG	1500	1200	987	817	694	600	
	T 1,2	MT		10,2	12	14	16	18	
		KG		1200	987	817	694	600	
	T 1,5	MT	8,6	10,3	12	14	16		
		KG	1500	1200	994	824	700		
	T 1,2	MT		10,3	12	14	16		
		KG		1200	994	824	700		

18.60/15



Space requirement • Abmessigen • Encombrement au montage
 Ingombro montaggio • Espacio máximo de montaje

18.60		m/min	kw	cv	kg T.	⚡	
		4	1.3	1	1500	V	220 380
		14	5.3	4	1500	HZ	
		28	6.6	5	600	KW	6,3
		22	1.5	2			
		1	1.1	1.5			

Poids de construction sans essieux • Konstruktionsgewicht ohne transportachse
 Dead weight without axles • Peso della gru senza assali
 Peso de la grua sin ejes

kg 4400

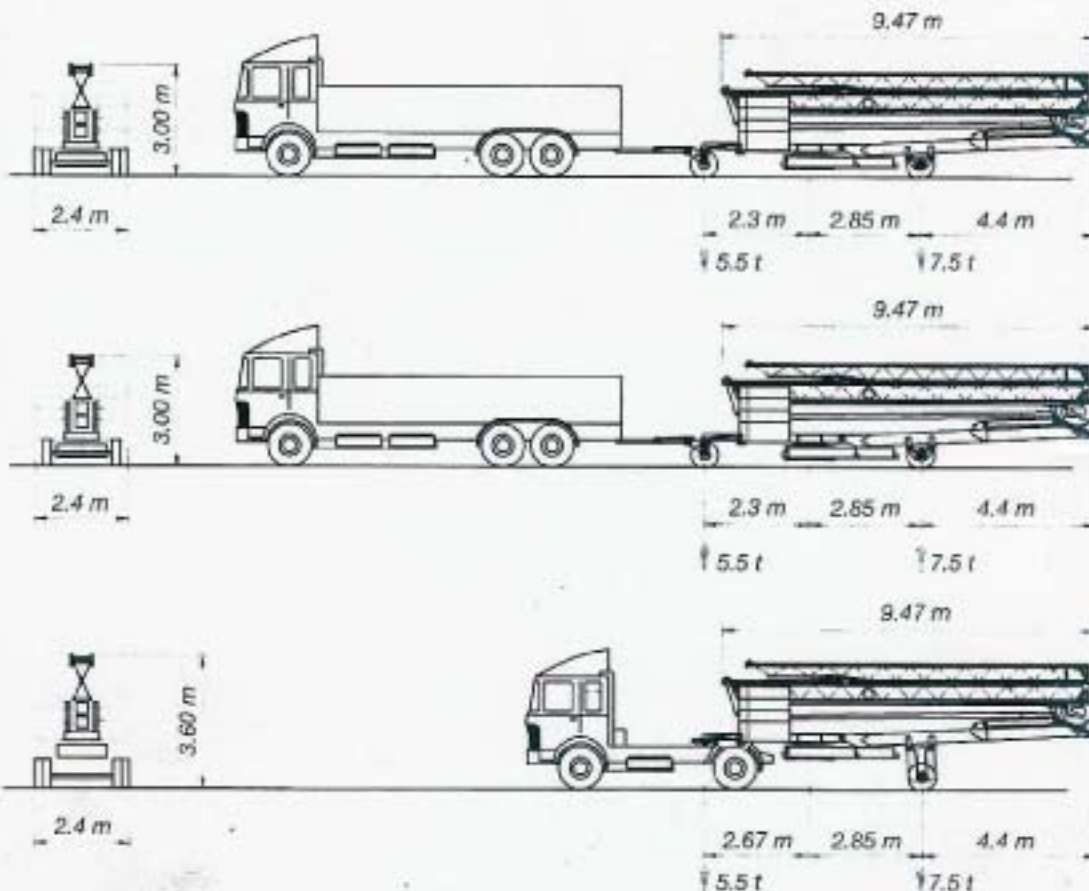
18.60/15

TRANSPORT
ROAD

TRANSPORT
STRASSE

TRANSPORT
ROUTIER

TRASPORTO
SU STRADA

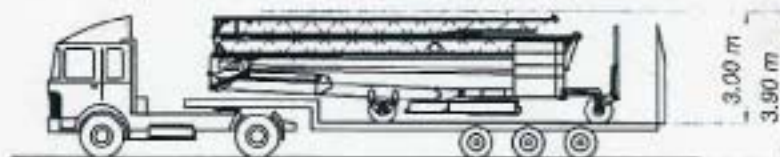


ON
LORRY

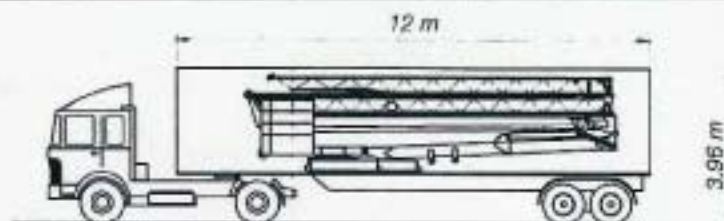
AUF
LKW

SUR
CAMION

SU
CAMION



CONTAINER OPEN TOP 40'



SUBJET TO MODIFICATION • ANDERUNGEN VORBEHALTEN • MODIFICATION RESERVÉES • CON RISERVA DI MODIFICA

GRU

Via Lodi, 3 - 27040 PORTALBERA (PV) - ITALIA
Telefono 0039 0385 266480 - Fax 0039 0385 266252